



# Premier Lockers

NEW ZEALAND'S LOCKER SPECIALIST



## TAMBOUR CABINET

Premier Locker's Tambour cabinets are ideal for office storage needs. Available in four height options, these Tambour Cabinet's retractable doors, and adjustable shelf heights will allow you to store a variety of office goods. These lockable cabinets are ideal for workstations, confined spaces, narrow corridors and an array of office

### FEATURES

- ▶ Tambour Door Cabinets have been Blue Tick AFRDI approved, Reference #13509/1
- ▶ Retractable doors that do not take up walkway or aisle space
- ▶ Complete with adjustable interior leveling feet
- ▶ Barrel exchange locking system is fitted and comes with anti-bacterial keys
- ▶ Shelves are adjustable in 32mm increments
- ▶ 40kg UDL shelf capacity
- ▶ Quality powder coated finish
- ▶ 10-year warranty

### STOCK COLOURS

WHITE SATIN

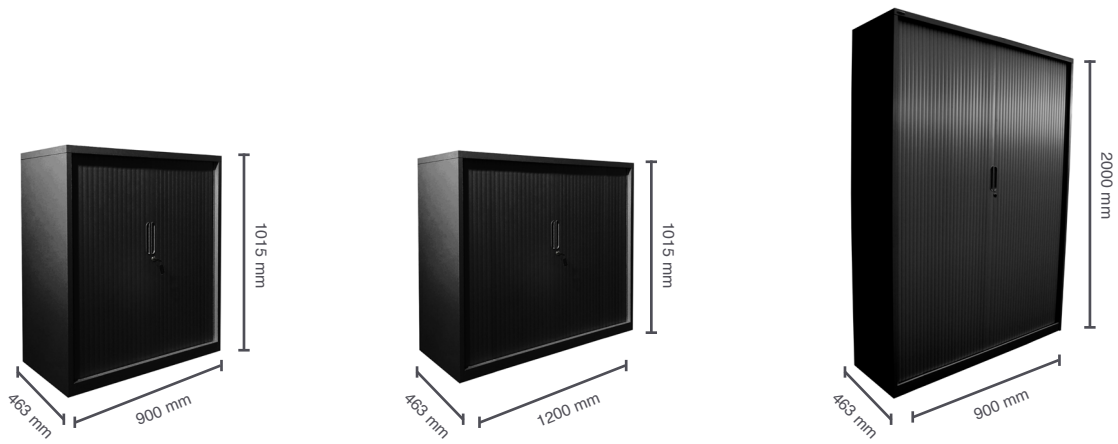
BLACK SATIN



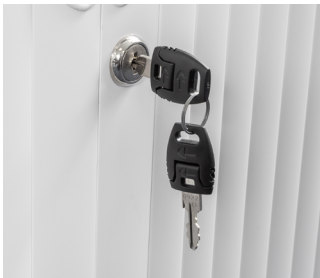
P: 0800 146 199

[www.premier-lockers.co.nz](http://www.premier-lockers.co.nz)

[sales@premier-lockers.co.nz](mailto:sales@premier-lockers.co.nz)



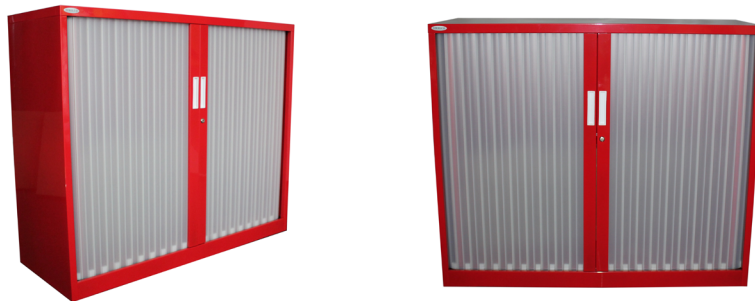
## STANDARD LOCK OPTIONS



Key Lock available

## PRODUCT CUSTOMISATION

We focus on delivering products to our customers that meet their specific requirements. As a result of our manufacturing capabilities, if you're looking for a custom size, colour or product, chances are we can do it! Contact your local sales representative for more information.



## TECHNICAL SPECIFICATIONS

CODE	DESCRIPTION	DIMENSIONS
OTD1015/900	Tambour Door Cabinet - 2 Shelves	1015H x 900W x 463D
OTD1015/1200	Tambour Door Cabinet - 2 Shelves	1015H x 1200W x 463D
OTD1200/900	Tambour Door Cabinet - 3 Shelves	1200H x 900W x 463D
OTD1200/1200	Tambour Door Cabinet - 3 Shelves	1200H x 1200W x 463D
OTD1320/900	Tambour Door Cabinet - 3 Shelves	1320H x 900W x 463D
OTD1320/1200	Tambour Door Cabinet - 3 Shelves	1320H x 1200W x 463D
OTD2000/900	Tambour Door Cabinet - 5 Shelves	2000H x 900W x 463D
OTD2000/1200	Tambour Door Cabinet - 5 Shelves	2000H x 1200W x 463D

\*Due to Premier Locker's local manufacturing capability, different configurations and sizes can be supplied upon request to suit nearly any office environment correctly. Please contact your sales representative for further information.

P: 0800 146 199

[www.premier-lockers.co.nz](http://www.premier-lockers.co.nz)

[sales@premier-lockers.co.nz](mailto:sales@premier-lockers.co.nz)